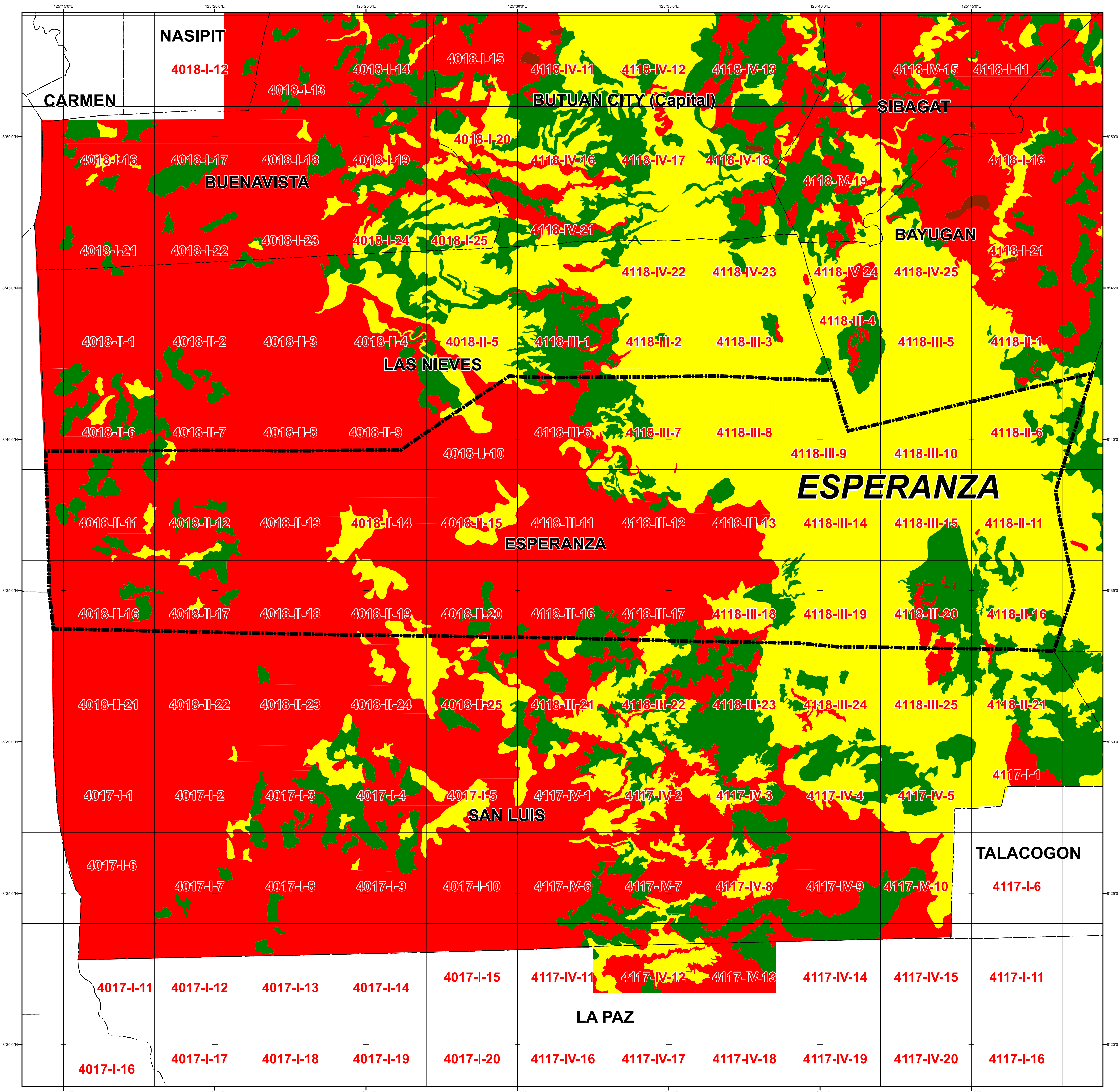
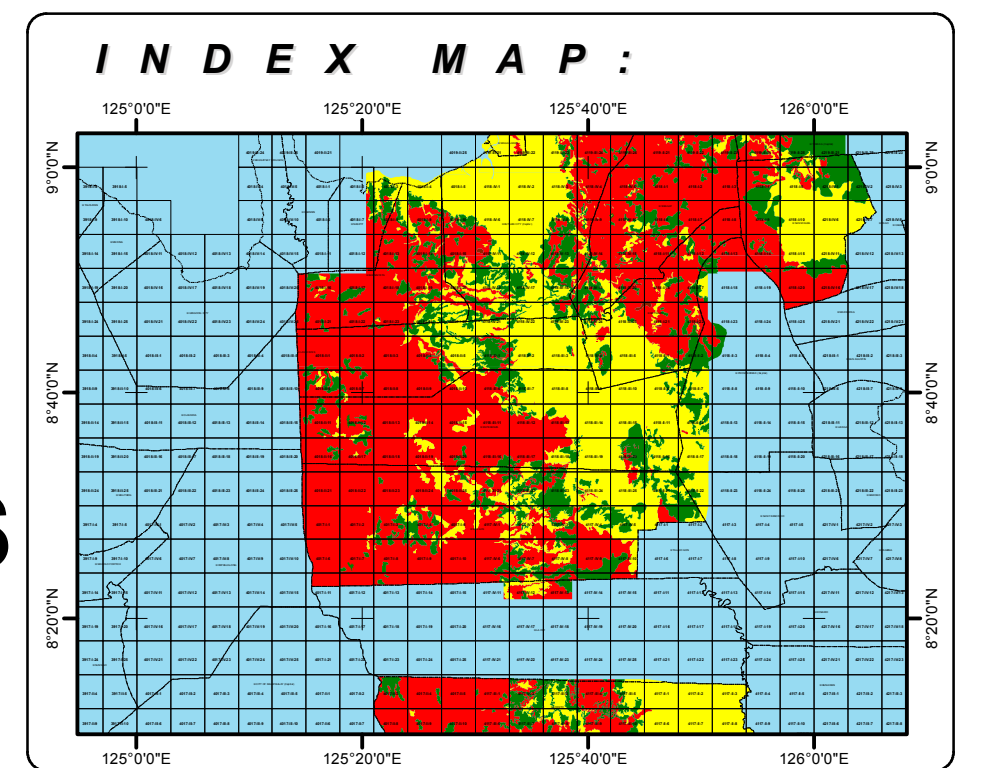


# DETAILED LANDSLIDE HAZARD MAP OF MUNICIPALITY OF ESPERANZA, PROVINCE OF AGUSAN DEL SUR, PHILIPPINES



### LEGEND :

- Very high landslide susceptibility / Critical areas**  
Areas usually with steep to very steep slopes and underlain by weak materials. Recent landslides, escarpments and tension cracks are present. Human initiated effects could be an aggravating factor.
- High landslide susceptibility**  
Areas usually with steep to very steep slopes and underlain by weak materials. Areas with numerous old/inactive landslides.
- Moderate landslide susceptibility**  
Areas with moderately steep slopes. Soil creep and other indications for possible landslide occurrence are present.
- Low landslide susceptibility**  
Gently sloping areas with no identified landslides.
- Debris flow path / Possible accumulation zone**  
Areas that could be affected by landslide debris materials.

- Main road
- Secondary road
- Track; trail
- River
- Municipal boundary
- Barangay center location
- Purok/Sito location
- School
- Hospital
- Church

**BACUAG CITY QUADRANGLE**  
Province of Surigao del Norte  
Region XIII

